

June 29, 2026
City Commission Room, 701 N. Jefferson, Junction City KS 66441

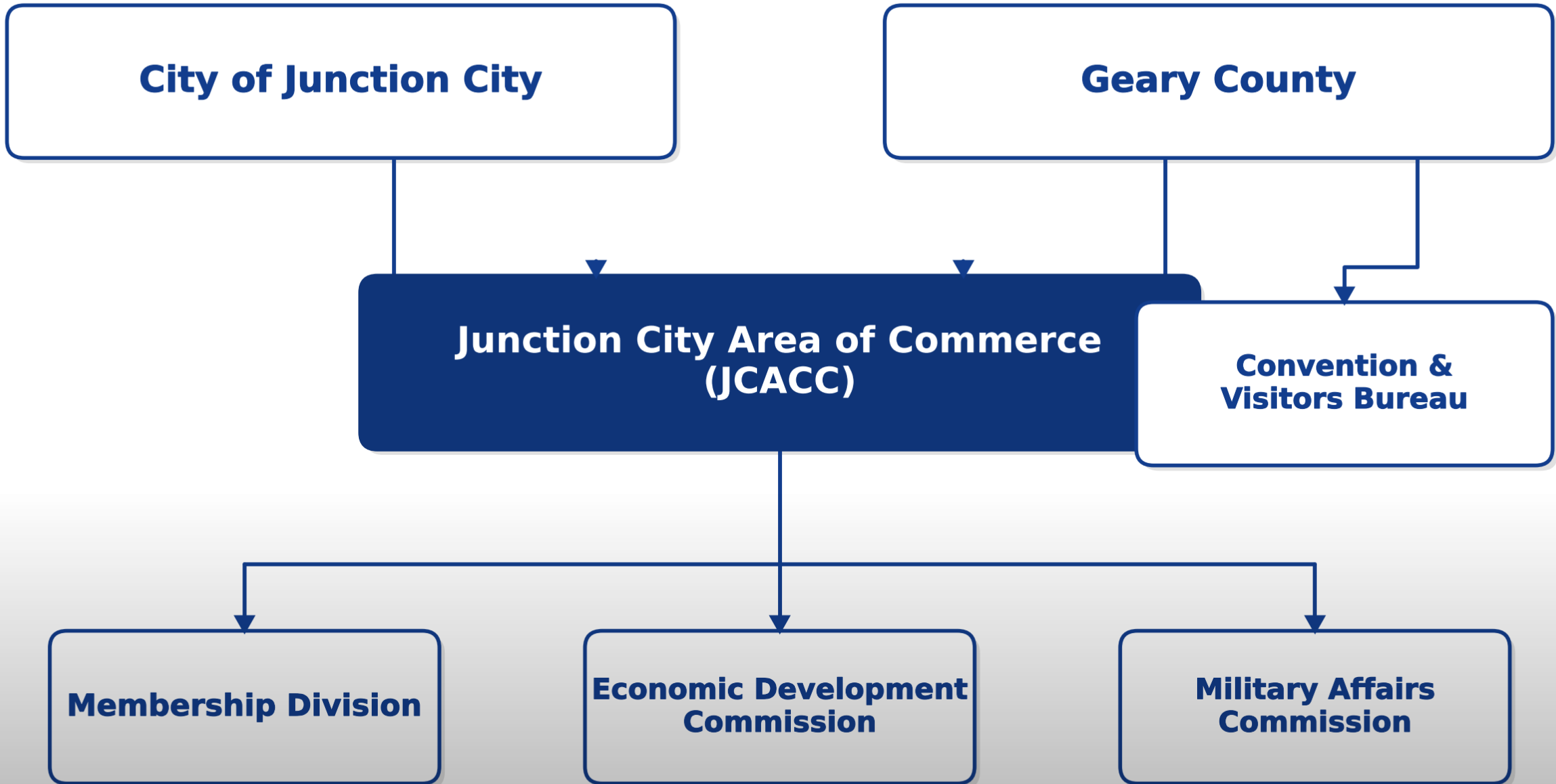
Mayor Terry Butler
Vice Mayor Sam Yoskowitz
Commissioner Pat Landes
Commissioner Richard Pinaire
Commissioner Kelly Niemczyk
City Manager Kim Zimmerman
City Attorney Britain Stites
Deputy City Clerk Maygan Muller
City Finance Director Jamel Wilcox

1. **6:30 P.M. - CALL TO ORDER:**
2. **PUBLIC COMMENT:** The Commission requests that comments be limited to a maximum of two minutes for each person. Please state your name and address for the record.
3. **NEW BUSINESS:**
 - a. Discussion on Interlocal Chamber of Commerce Master Agreement & Economic Development Commission structure. (p.2)
4. **ADJOURNMENT:**



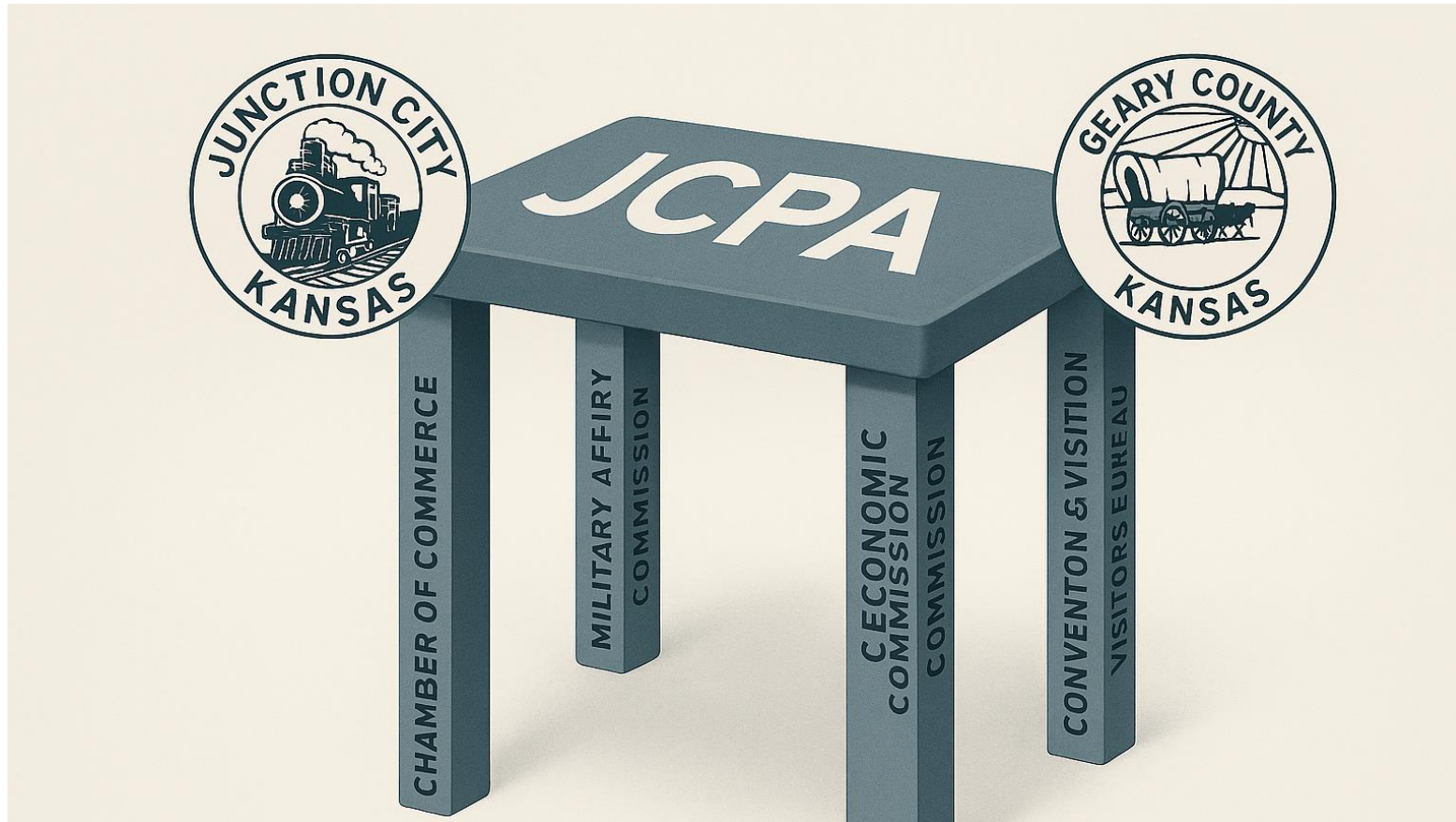
Junction City Prosperity Alliance

OPTIONS FOR THE COMMUNITY'S
ECONOMIC HEALTH OF THE FUTURE



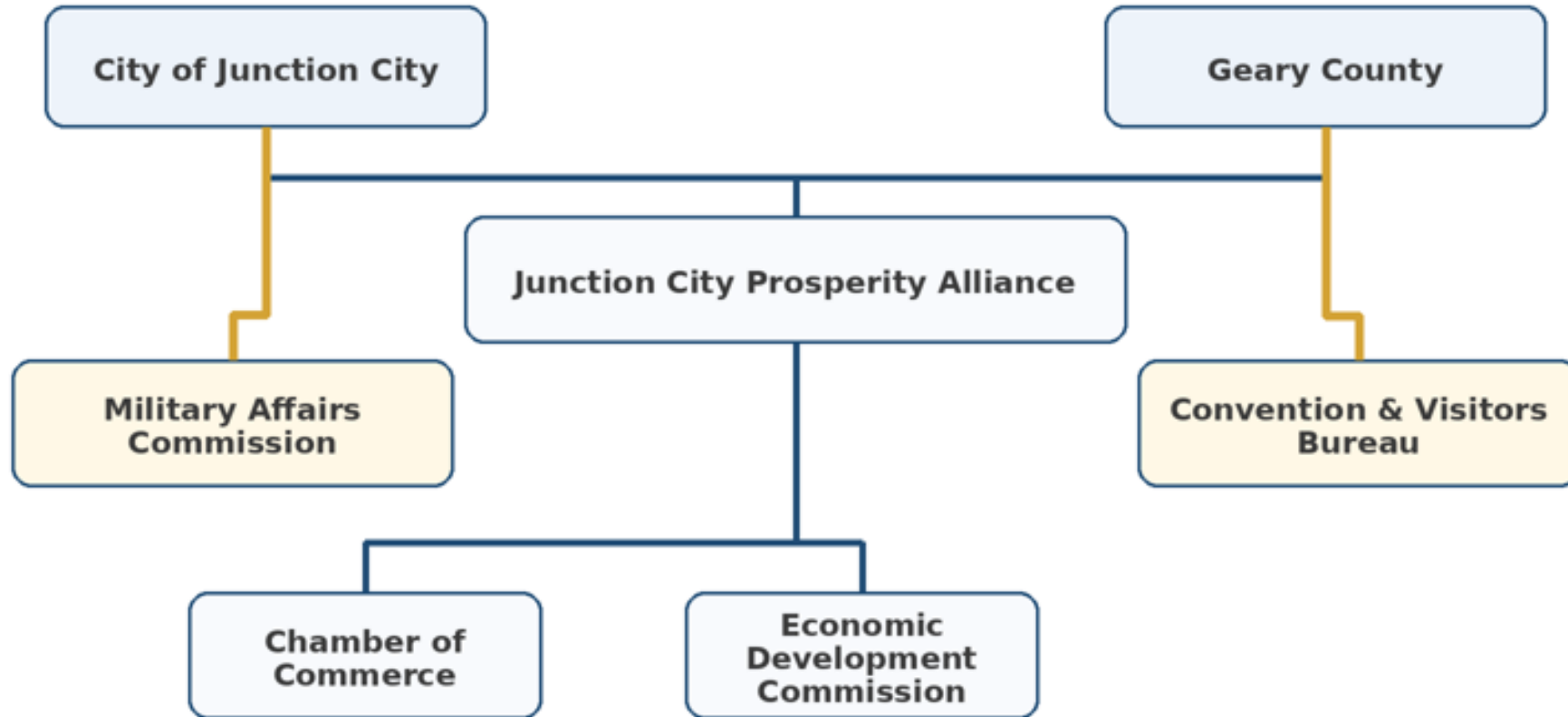
Current Structure

Eat @ the Table . . . but which legs?



Junction City Prosperity Alliance

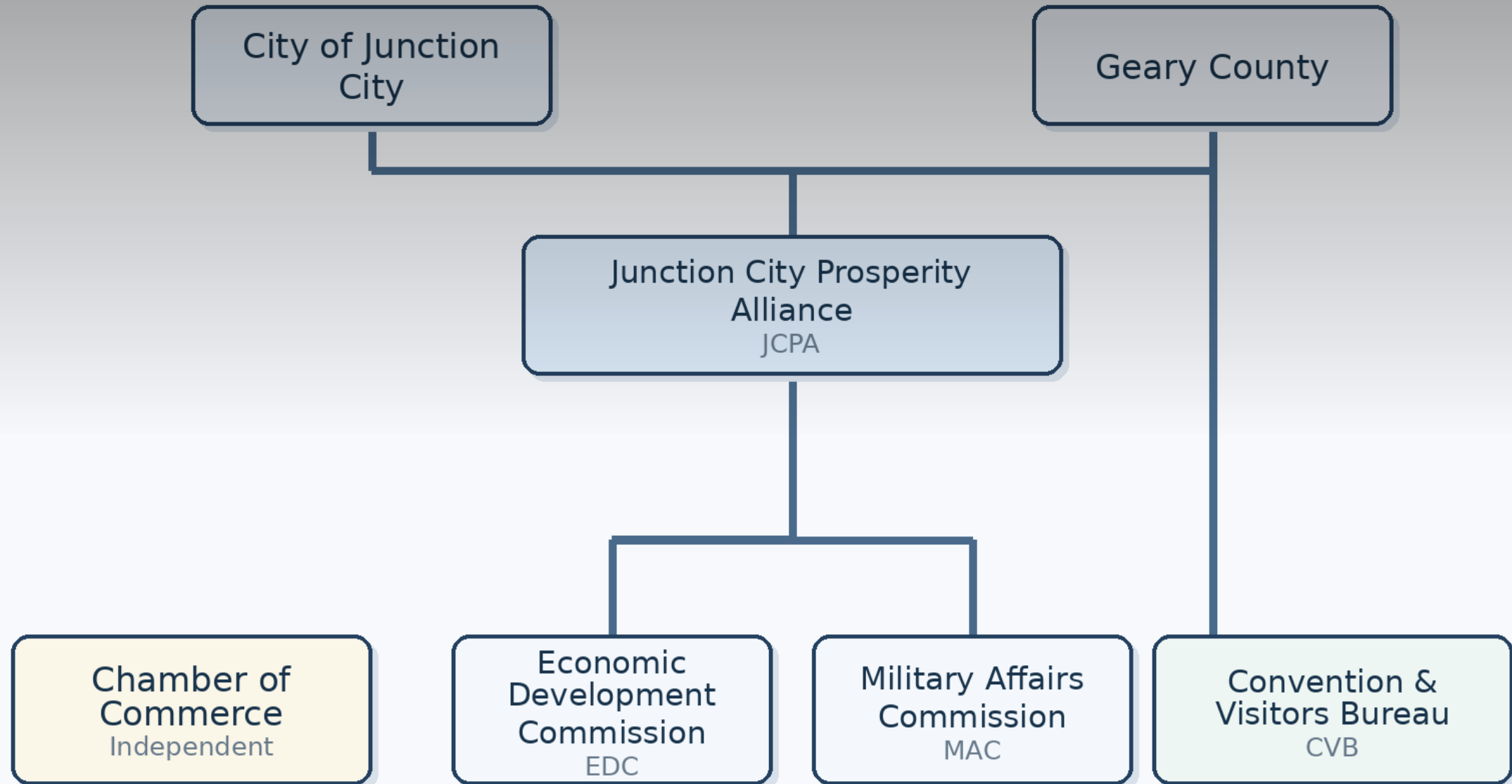
Option A: Chamber and EDC under JCPA; MAC under City; CVB under County



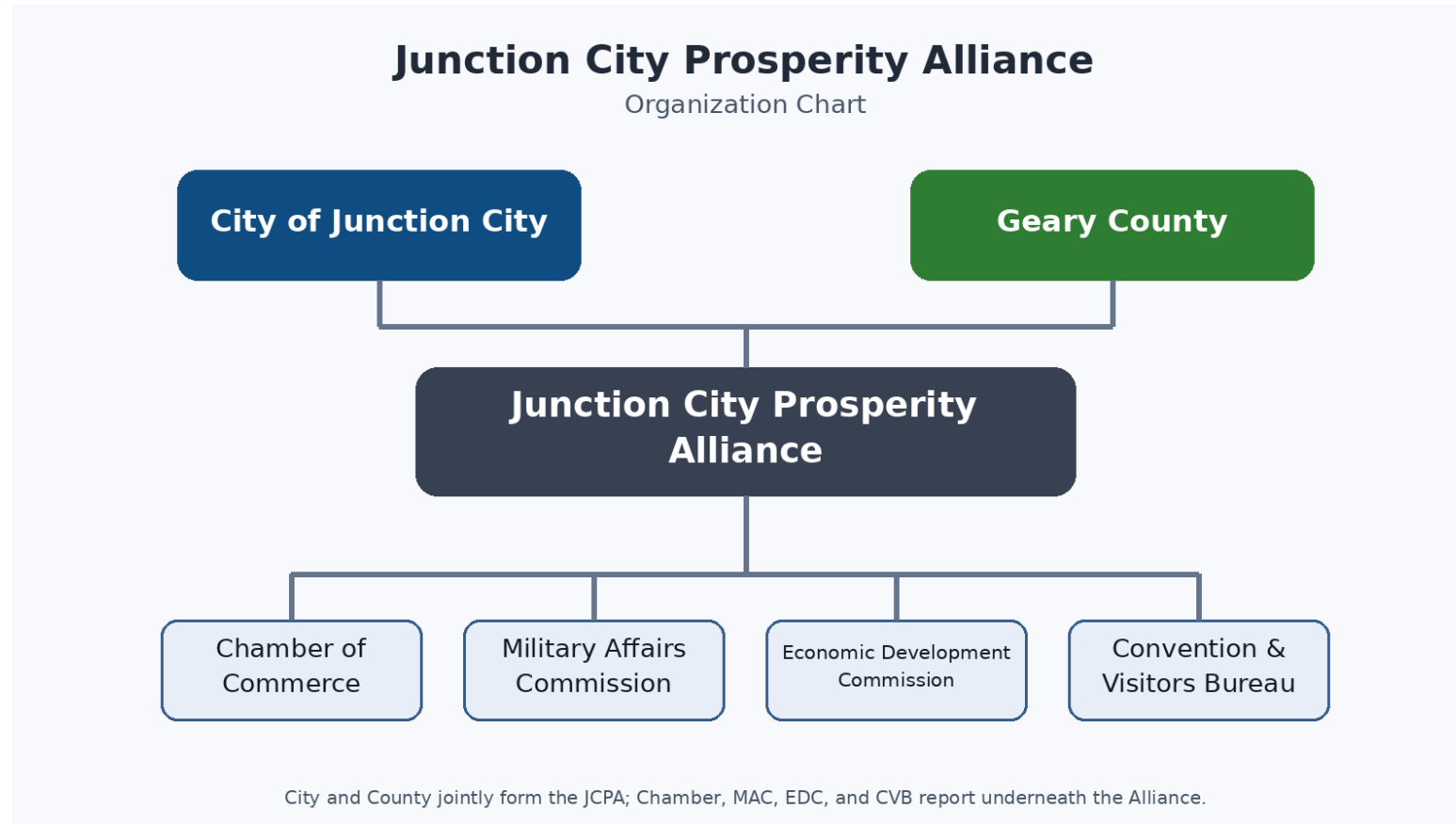
Illustrative governance structure only

Two and Two

Two by Two Redux



Four Legs Under a Table



How to hire? Select?

Have City and
County input?

City and County
authority?

Or only keep in
Chamber?

By chamber board?

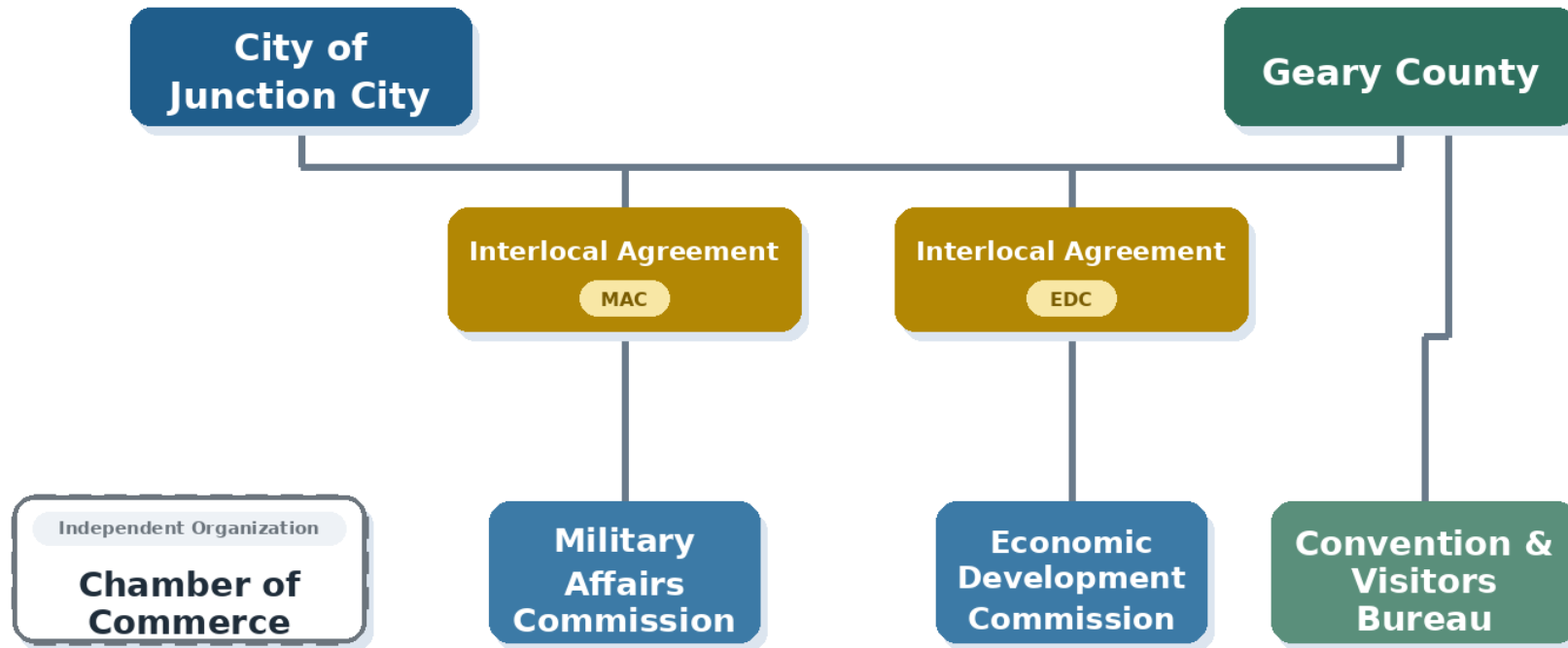
By staff?

Separate out
president of
operations from
commission/division
chambers?

Separate Silos and Interlocals

Alternative Governance Structure

Separate interlocal agreements for MAC and EDC; Geary County oversees CVB; Chamber remains independent.



Shared participation is shown through the separate interlocal agreement boxes.

Funding Thoughts

Ad Valorem taxes

- $\frac{3}{4}$ mil from City
- $\frac{1}{2}$ mil from County
- More stable?

Sales Tax

- Shawnee County/Topeka does this
- "incentive" for work

Responsiveness of Prosperity Alliance

- Quarterly Reports sufficient?
- More input/control by municipalities
- Setting of goals
- Follow policies (maybe adopt from City or County?)

fiscal/financial

personnel





Other Thoughts to Consider?